

# DISTRICT ACCOUNTABILITY COMMITTEE

## 2018 Capital Improvement Program

### Calendar Year 2019 Update

February 18, 2020

# 2019 Update

- **Program Financial Status**

- **2019 - Spend - \$81,380,375\***

\*Includes Retention

- **District Projects: \$48.2M**
- **Charter Projects/Debt Payoff: \$23.5M**
- **6800 Joyce St. Purchase (North Transportation): \$7.0M**
- **Encumbered: \$33.8M**

## Activity by Articulation Area

Alameda - 9

Arvada - 15

Arvada West - 13

Bear Creek - 8

Chatfield - 6

Columbine - 8

Conifer - 6

Dakota Ridge - 4

Evergreen - 6

Golden - 11

Green Mountain - 11

Jefferson - 4

Lakewood - 6

Pomona - 6

Ralston Valley - 4

Standley Lake - 18

Wheat Ridge - 12

Options - 11

# 2019 Update

Site	Status								
	Consultant Selection	Contractor Selection	Design Advisory Group	Schematic Design	Design Development	Construction Documents	Pricing	Construction	Percent Complete
<b>Started 1Q2019 PROJECTS</b>									
<b>Addition/Remodel, Replacement</b>									
Alameda Intl - Addition/Remodel	√	√	√	√	√	●	●		
Arvada HS - Addition/Remodel	√	√	√	√	√	√	√	●	25%
Columbine HS Addition/Remodel	√	√	√	√	√	●	●		
Green Mountain HS Addition/Remodel	√	√	√	√	√	●	●		
Kendrick Lakes ES Replacement	√	√	√	√	√	√	√	●	5%
Three Creeks K-8 Addition	√	√	√	√	√	√	√	●	50%
Wilmot ES Addition	√	√	√	√	√	√	√	●	20%
<b>Track &amp; Artificial Turf Fields</b>									
Arvada HS	√	√	√	√	√	√	√	√	100%
Chatfield HS	√	√	√	√	√	√	√	√	100%
Conifer HS	√	√	√	√	√	√	√	●	98%
Dakota Ridge HS	√	√	√	√	√	√	√	√	100%
Evergreen HS	√	√	√	√	√	√	√	√	100%
Lakewood HS	√	√	√	√	√	√	√	√	100%
Ralston Valley HS	√	√	√	√	√	√	√	√	100%
West Jefferson MS	√	√	√	√	√	√	√	√	100%
<b>Paving Projects</b>									
Devanny ES	√	√	√	√	√	√	√	√	100%
Evergreen MS	√	√	√	√	√	√	√	√	100%
Hackberry Hill ES	√	√	√	√	√	√	√	√	100%
Maple Grove ES	√	√	√	√	√	√	√	√	100%
Parmalee ES	√	√	√	√	√	√	√	√	100%
Peck ES	√	√	√	√	√	√	√	√	100%

# 2019 Update

Site	Status								
	Consultant Selection	Contractor Selection	Design Advisory Group	Schematic Design	Design Development	Construction Documents	Pricing	Construction	Percent Complete
<b>Started 1Q2019 PROJECTS</b>									
<b>Playground Projects</b>									
Belmar ES	✓	✓	✓	✓	✓	✓	✓	✓	100%
Columbine Hills ES	✓	✓	✓	✓	✓	✓	✓	✓	100%
Eiber ES	✓	✓	✓	✓	✓	✓	✓	✓	100%
Free Horizon Montessori	✓	✓	✓	✓	✓	✓	✓	✓	100%
Patterson ES	✓	✓	✓	✓	✓	✓	✓	✓	100%
Ralston ES	✓	✓	✓	✓	✓	✓	✓	✓	100%
Welchester ES	✓	✓	✓	✓	✓	✓	✓	✓	100%
Wilmore-Davis ES	✓	✓	✓	✓	✓	✓	✓	✓	100%
<b>Roofing</b>									
Lakewood HS	✓	✓	✓	✓	✓	✓	✓	✓	100%
Ralston Valley HS	✓	✓	✓	✓	✓	✓	✓	✓	100%
Eiber ES	✓	✓	✓	✓	✓	✓	✓	✓	100%
Green Gables ES	✓	✓	✓	✓	✓	✓	✓	✓	100%
Wilmot ES	✓	✓	✓	✓	✓	✓	✓	✓	100%
<b>Security</b>									
IT Cameras - Districtwide	✓	✓	✓	✓	✓	●	●	●	50%
Security Locks -Districtwide	✓	✓	✓	✓	✓	✓	✓	●	95%
Site Lighting - 6 sites	✓	✓	✓	✓	✓	✓	✓	✓	100%
Fire Alarm Upgrades	✓	✓	✓	✓	✓	✓	✓	✓	100%
Security Glazing Replacement	✓	✓	✓	✓	✓	●	●	●	15%
<b>Flooring Replacement</b>									
8 ES Sites	✓	✓	✓	✓	✓	✓	✓	✓	100%
<b>Fixtures, Furnishings &amp; Equipment (FF&amp;E)</b>									
Arvada K8	✓	✓	✓	✓	✓	✓	✓	✓	100%
West Jefferson MS	✓	✓	✓	✓	✓	✓	✓	✓	100%

# 2019 Update

Site	Status								
	Consultant Selection	Contractor Selection	Design Advisory Group	Schematic Design	Design Development	Construction Documents	Pricing	Construction	Percent Complete
<b>3Q2019 PROJECTS</b>									
<b>Addition/Remodel, Replacement or New</b>									
Conifer HS Addition/Remodel	√	√	√	√	●				
Jefferson Jr/Sr HS Addition/Remodel	√	√	√	●					
Bell MS Addition	√		√	√	●				
Lumberg ES Addition/Remodel	√	√	√	●					
Manning MS Addition	√		√	√	●				
South Warren Tech Facility	√		√	√	●				
Trailblazer Stadium	√		√	√	√	●			
Wayne Carle MS Addition	√		√	√	●				
<b>Track &amp; Artificial Turf Fields</b>									
Arvada West HS Track	√	√	√	√	√	●			
Columbine HS	√	√	√	√	√	●			
Golden HS Track	√	√	√	√	√	●			
Green Mountain HS	√	√	√	√	√	●			
Pomona HS	√	√	√	√	√	●			
Standley Lake HS	√	√	√	√	√	●			
<b>Paving Projects</b>									
Columbine Hills ES	√		√	√	√	●			
Everitt MS	√		√	√	√	●			
Lawrence ES	√		√	√	√	●			
Mitchell ES	√		√	√	√	●			
Ryan ES	√		√	√	√	●			
Shelton ES	√		√	√	√	●			
<b>Mechanical Projects</b>									
Patterson ES	√		√	√	√	●			
Ryan ES	√		√	√	√	●			
Stott ES	√		√	√	√	●			
Westridge ES	√		√	√	√	●			

# 2019 Update

Site	Status								
	Consultant Selection	Contractor Selection	Design Advisory Group	Schematic Design	Design Development	Construction Documents	Pricing	Construction	Percent Complete
<b>3Q2019 PROJECTS</b>									
<b>Efficiency &amp; Future Ready</b>									
Adams ES	✓		✓	✓	✓	●			
Arvada K-8	✓		✓	✓	✓	●			
Belmar ES	✓		✓	✓	✓	●			
Brady Option	✓		✓	✓	✓	●			
Columbine Hills ES	✓		✓	✓	✓	●			
Coronado ES	✓		✓	✓	✓	●			
Dutch Creek ES	✓		✓	✓	✓	●			
Eiber ES	✓		✓	✓	✓	●			
Foothills ES	✓		✓	✓	✓	●			
Fremont ES	✓		✓	✓	✓	●			
Green Gables ES	✓		✓	✓	✓	●			
Hackberry Hill ES	✓		✓	✓	✓	●			
Hutchinson ES	✓		✓	✓	✓	●			
Kullerstrand ES	✓		✓	✓	✓	●			
Lukas ES	✓		✓	✓	✓	●			
Ralston ES	✓		✓	✓	✓	●			
Semper ES	✓		✓	✓	✓	●			
Stober ES	✓		✓	✓	✓	●			
Vivian ES	✓		✓	✓	✓	●			
Welchester ES	✓		✓	✓	✓	●			
Witt ES	✓		✓	✓	✓	●			

# 2019 Update

Site	Status								
	Consultant Selection	Contractor Selection	Design Advisory Group	Schematic Design	Design Development	Construction Documents	Pricing	Construction	Percent Complete
<b>3Q2019 PROJECTS</b>									
<b>3Q 2019 Fixtures, Furnishings &amp; Equipment (FF&amp;E)</b>									
Adams ES	√		√	√	√				
Belmar ES	√		√	√	√				
Eiber ES	√		√	√	√				
Foothills ES	√		√	√	√				
Fremont ES	√		√	√	√				
Green Gables ES	√		√	√	√				
Hutchinson ES	√		√	√	√				
Lukas ES	√		√	√	√				
Stober ES	√		√	√	√				
Welchester ES	√		√	√	√				
Witt ES	√		√	√	√				
Kendrick Lakes ES	√		√	√	√				
Three Creeks K-8	√		√	√	√				
Wilmot ES	√		√	√	√				



# 2019 Update

Site	Status								
	Debt Reduction	Consultant Selection	Contractor Selection	Schematic Design	Design Development	Construction Documents	Pricing	Construction	Percent Complete
<b>Charter School Projects</b>									
Jefferson Academy HS								√	100%
Jefferson Academy ES/MS	Funds to Jefferson Academy HS Project								
Lincoln Academy		√	√	√	●				
Excel Academy		√	√	√	√				
Addenbrooke		√	√	√					
Collegiate Academy		√							
Doral									
Great Work Montessori									
Compass Montessori Golden	√								60%
Compass Montessori Wheat Ridge	√								60%
Montessori Peaks		√	●						
Rocky Mountain Academy of Evergreen	√								100%
Rocky Mountain Deaf School		√		√	●				
Woodrow Wilson Academy	√								100%
Mountain Phoenix		√	√	√	√	√	√	●	
Two Roads	√								100%
New America	√								100%

# 2019 Construction Projects



Creighton MS – 8 Classroom Addition



Creighton MS – Furniture



## Ken Caryl MS – 8 Classroom Addition

Issue – Locker delivery delay



Summit Ridge MS – 8 Classroom Addition

Columbine Hills ES



Free Horizon Montessori



Patterson International



Wilmore Davis ES



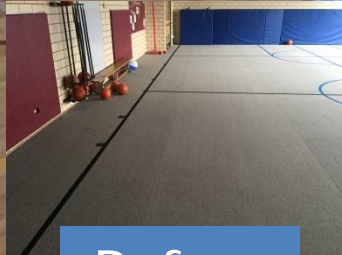
Playgrounds – 4 Schools



**Bradford K-8 – Gym Flooring**



Complete



Before

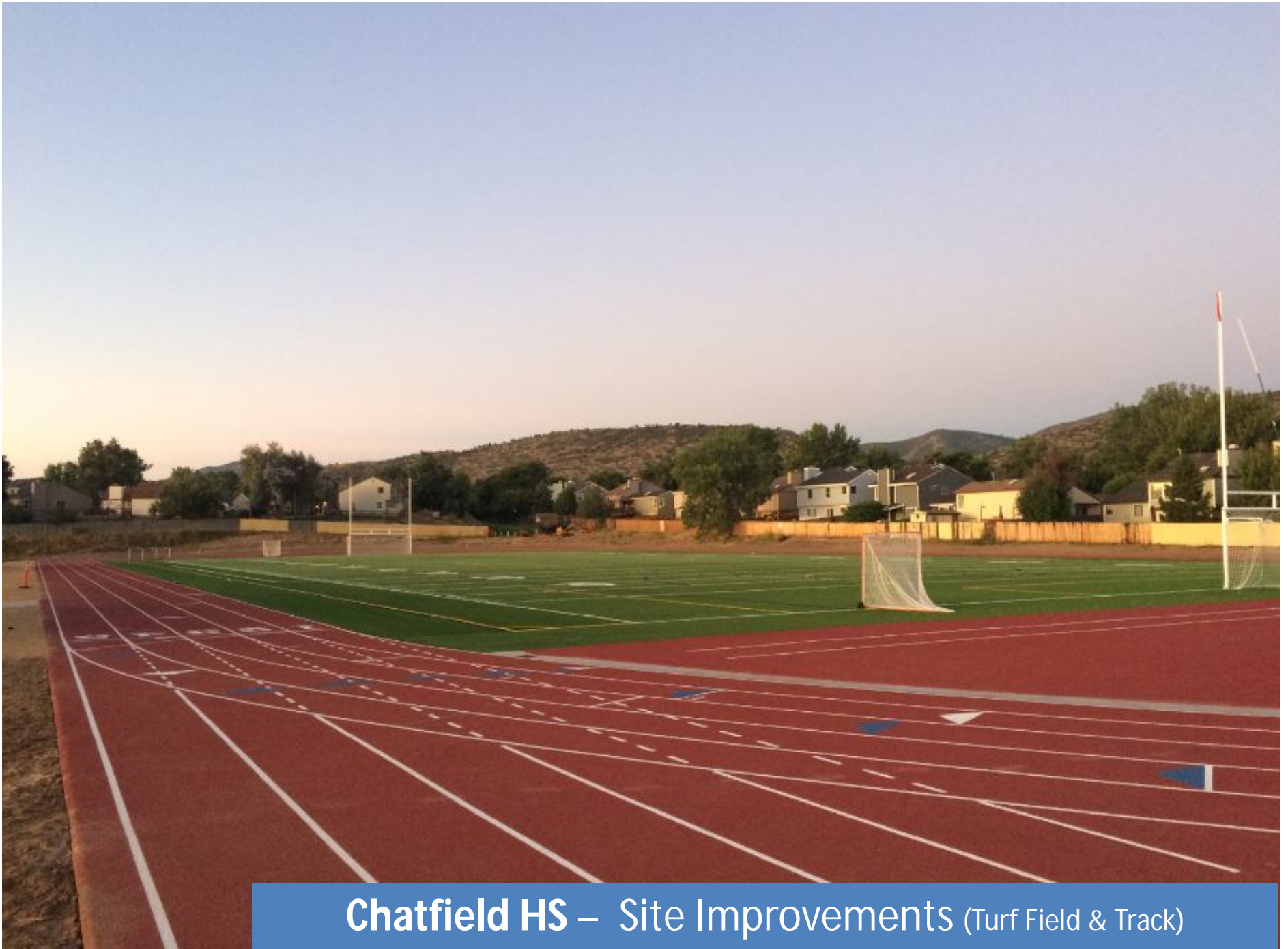
Wilmore Davis ES – Gym Flooring



Arvada K8 – Furniture



**Evergreen HS – Site Improvements** (Turf Field & Track)



**Chatfield HS – Site Improvements** (Turf Field & Track)



**West Jefferson MS – Site Improvements (Turf Field)**



SOUTHWEST CORNER



## Kendrick Lakes ES – Replacement

Construction

Dec. 2020  
Completion



Kendrick Lakes ES – Replacement



Wilmot ES – Addition



Construction

August 2020  
Completion



Wilmot ES – Addition

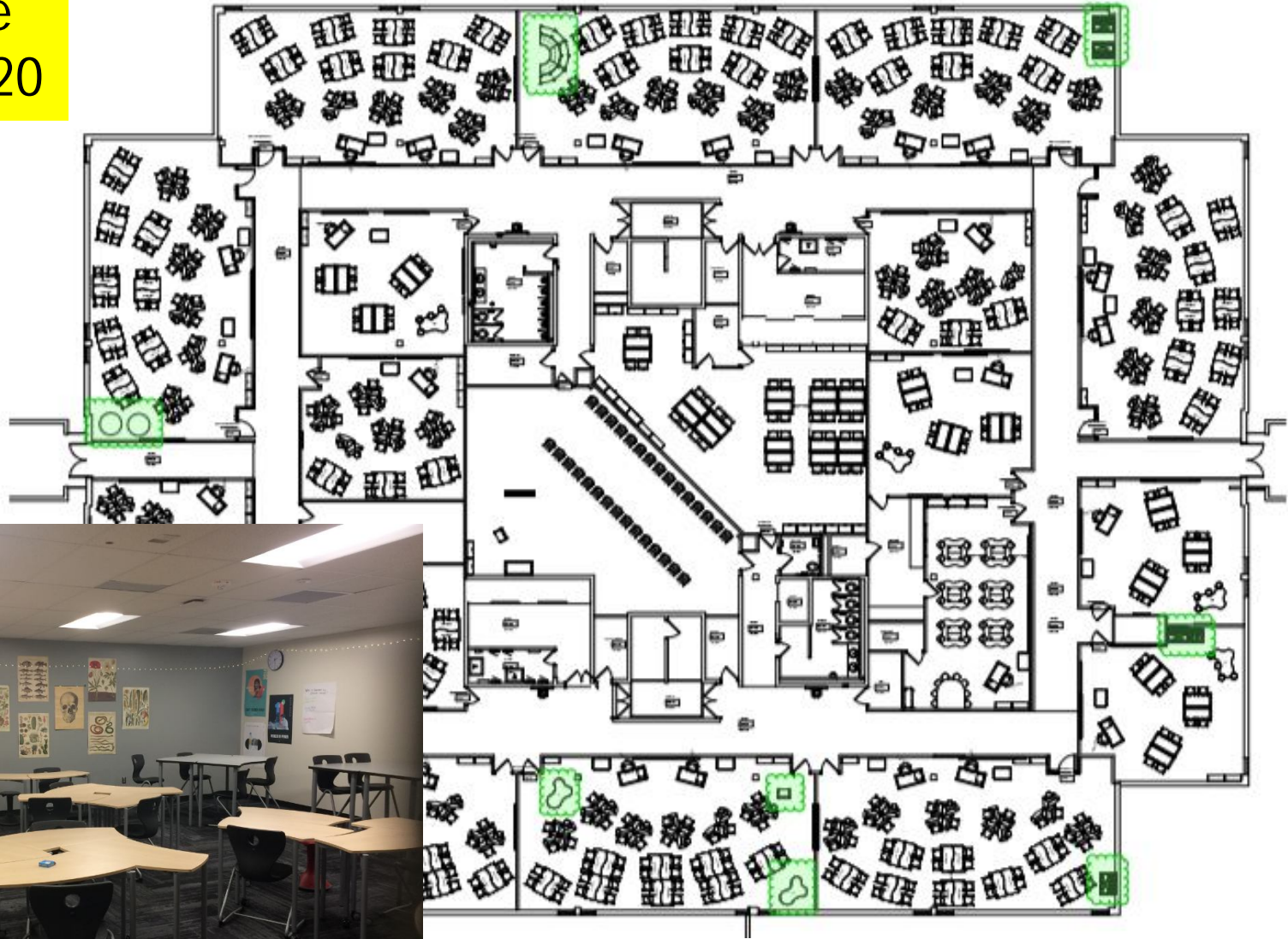
Construction

May 2020  
Completion



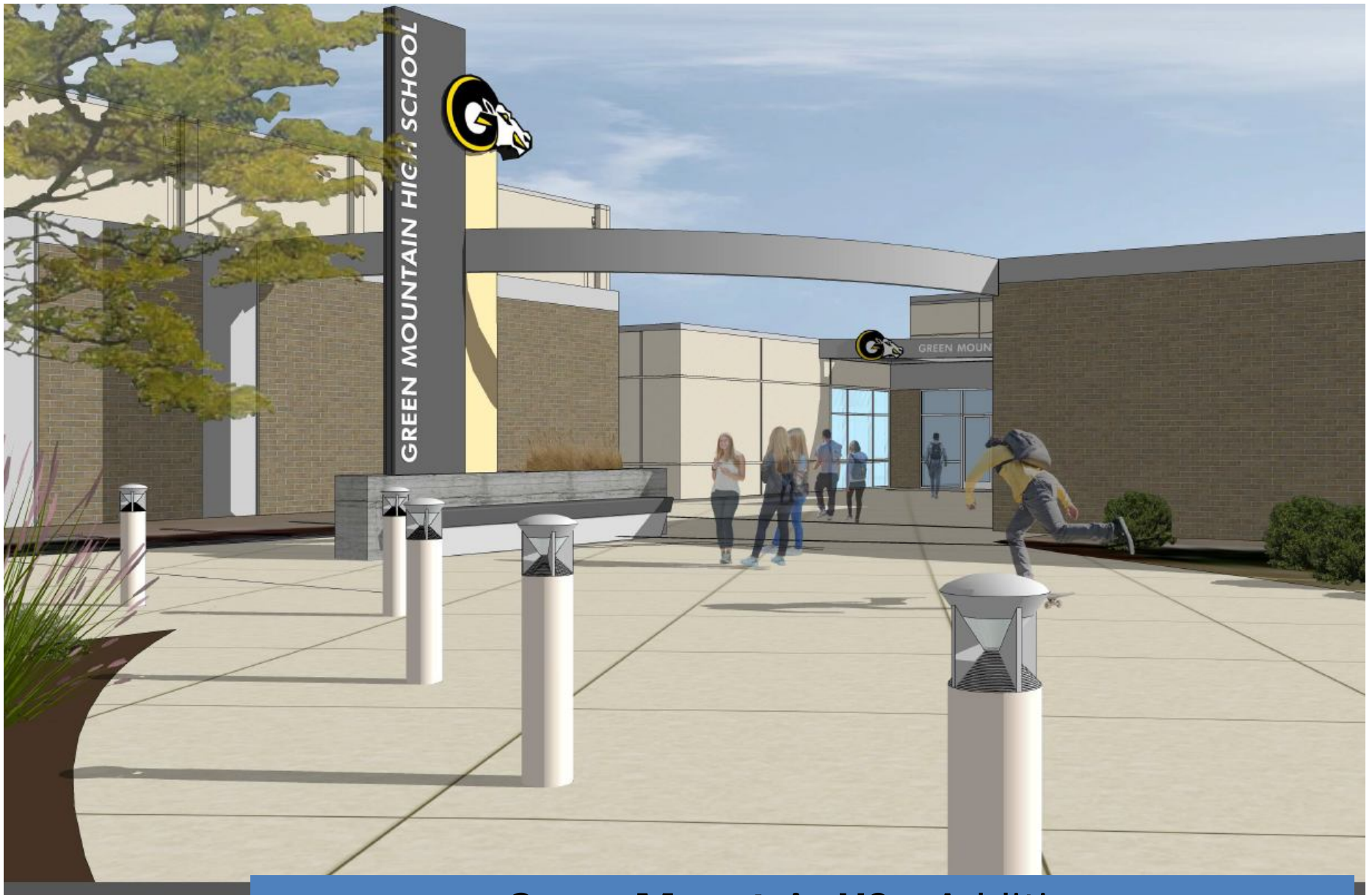
Three Creeks K8 – Addition

Construction  
Complete  
August 2020



Arvada HS – Addition – (Phase II)

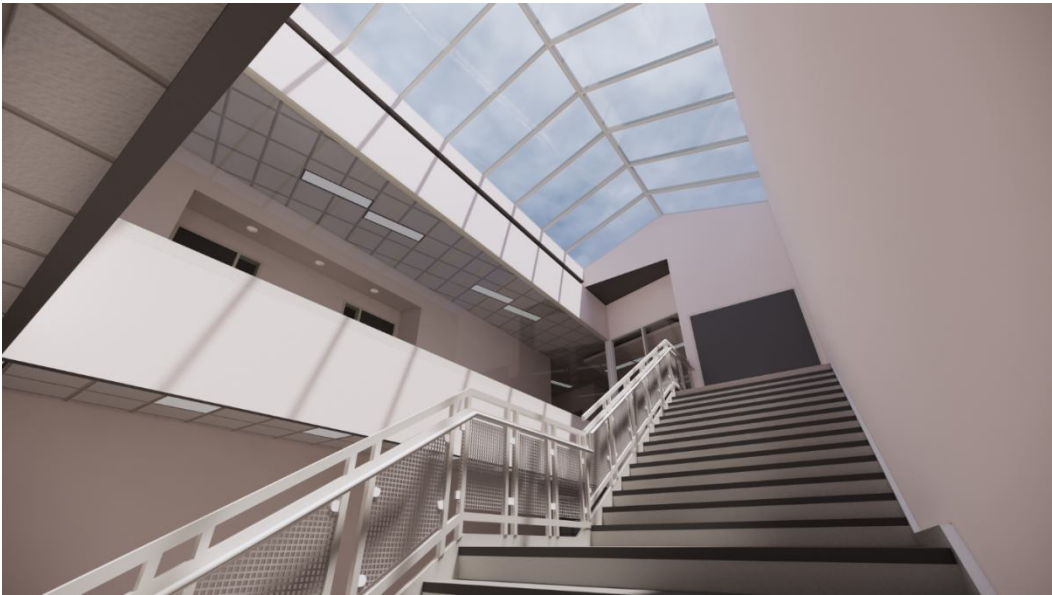
# 2020 Construction Starts



**Green Mountain HS – Addition**  
MOA – CMGC GE Johnson



**Columbine HS – Addition & Renovation**

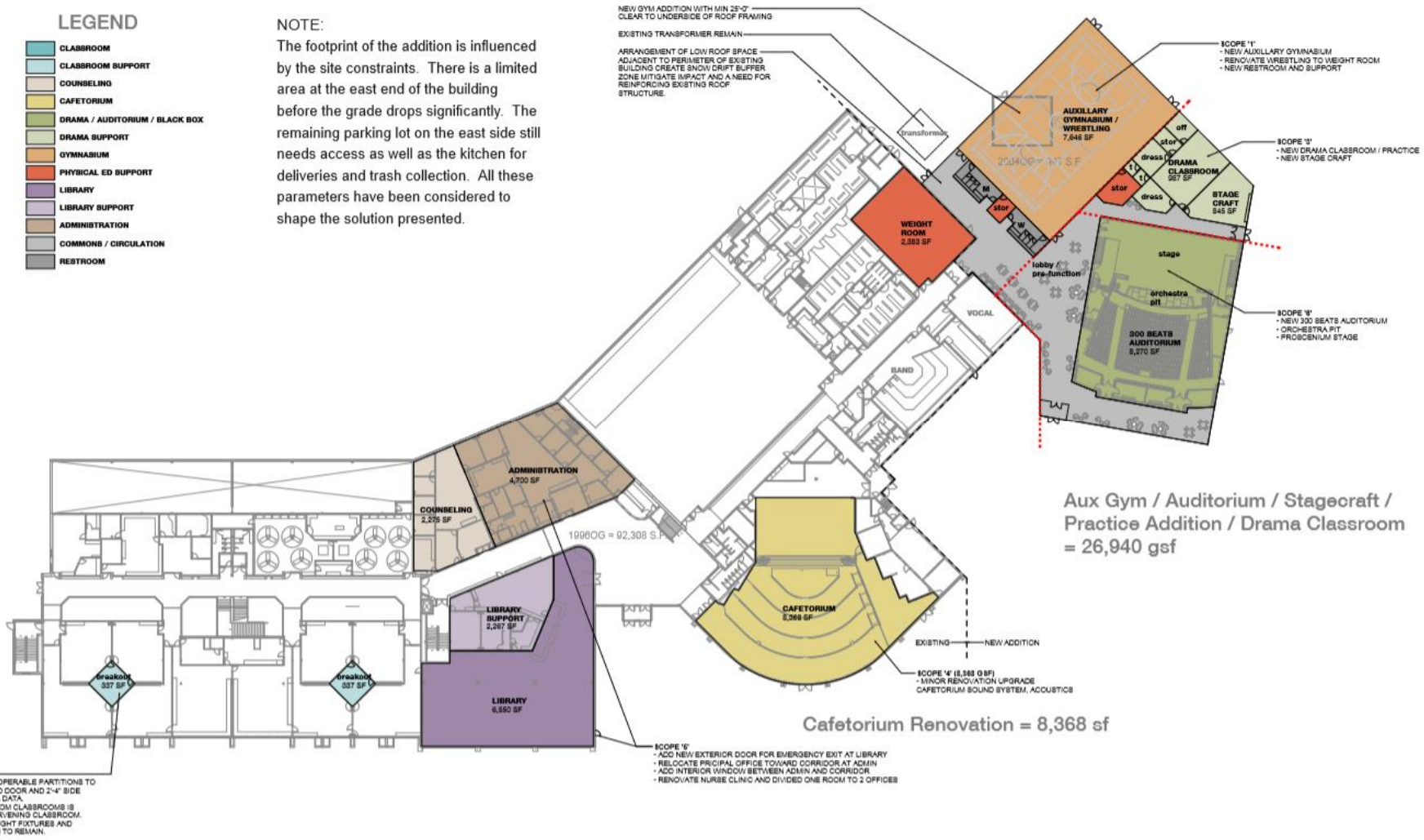


**Alameda HS – Addition & Renovation**

**LEGEND**

- CLASSROOM
- CLASSROOM SUPPORT
- COUNSELING
- CAFETERIUM
- DRAMA / AUDITORIUM / BLACK BOX
- DRAMA SUPPORT
- GYMNASIUM
- PHYSICAL ED SUPPORT
- LIBRARY
- LIBRARY SUPPORT
- ADMINISTRATION
- COMMONS / CIRCULATION
- RESTROOM

**NOTE:**  
 The footprint of the addition is influenced by the site constraints. There is a limited area at the east end of the building before the grade drops significantly. The remaining parking lot on the east side still needs access as well as the kitchen for deliveries and trash collection. All these parameters have been considered to shape the solution presented.



# Conifer HS – Addition & Renovation





**ARVADA WEST HIGH SCHOOL**  
11595 ALLENDALE DRIVE, ARVADA, CO 80004



**COLUMBINE HIGH SCHOOL**  
6201 S PIERCE STREET, LITTLETON, CO 80123



**GOLDEN HIGH SCHOOL**  
701 24TH STREET, GOLDEN, CO 80401



**GREEN MOUNTAIN HIGH SCHOOL**  
13175 WEST GREEN MOUNTAIN DRIVE, LAKEWOOD, CO 80228



**POMONA HIGH SCHOOL**  
8101 WEST POMONA DRIVE, ARVADA, CO 80005

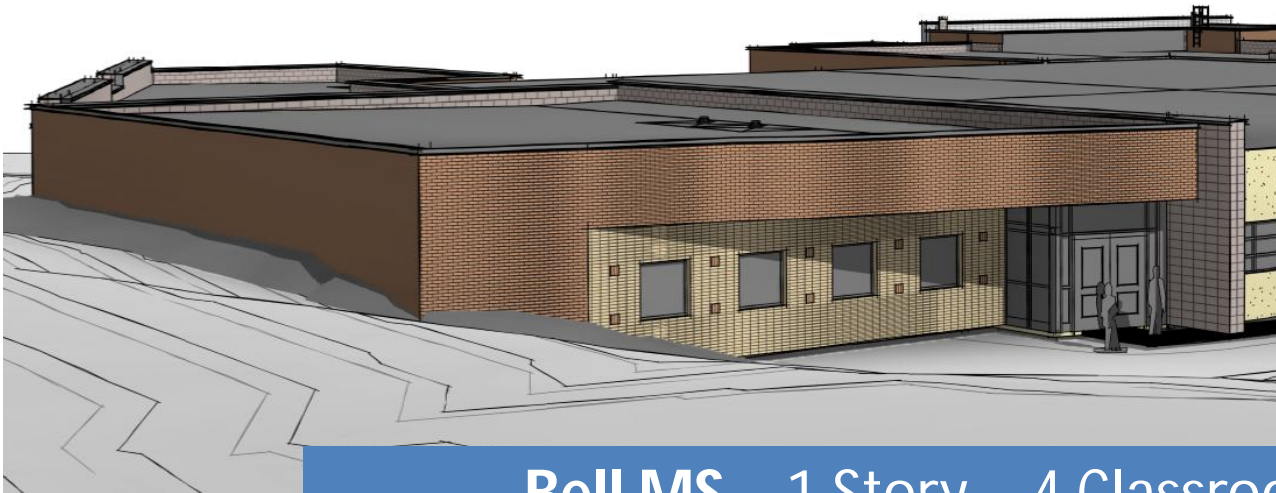
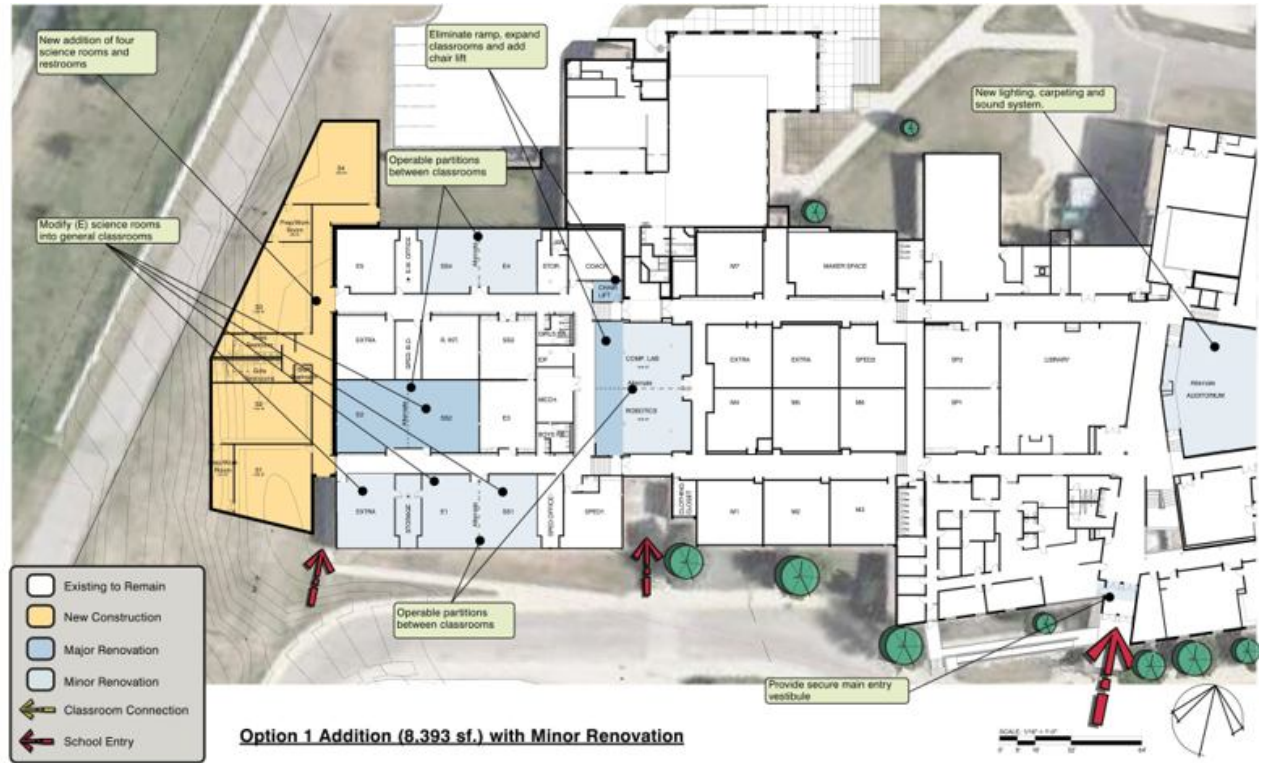


**STANDLEY LAKE HIGH SCHOOL**  
9300 WEST 104TH AVENUE, WESTMINSTER, CO 80021



**2020 Field Improvements**  
Awest HS, Columbine HS, Golden HS  
Green Mountain HS, Pomona HS, Standley Lake HS

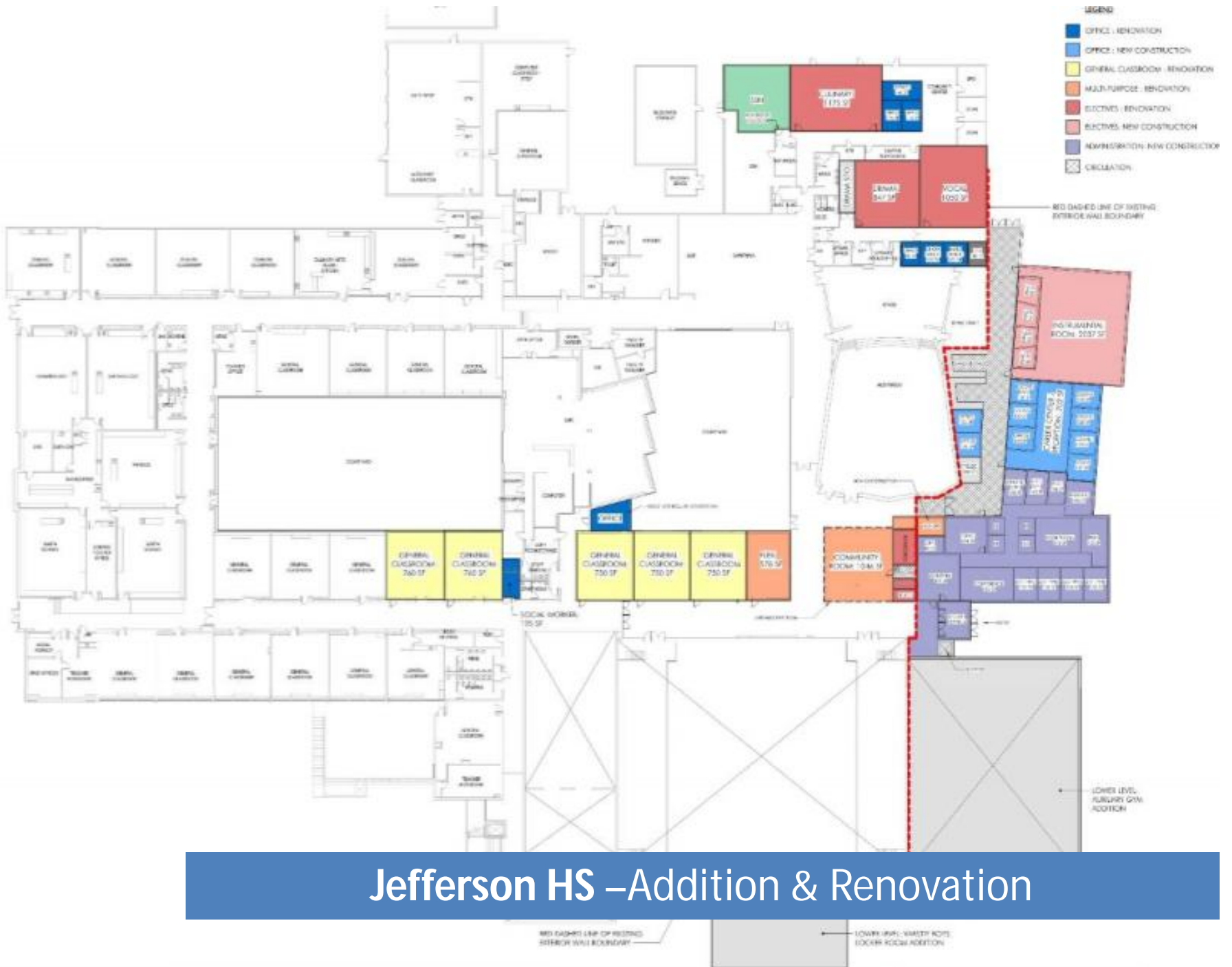
New Building, Additions & Renovations  
Start Summer / Fall 2020



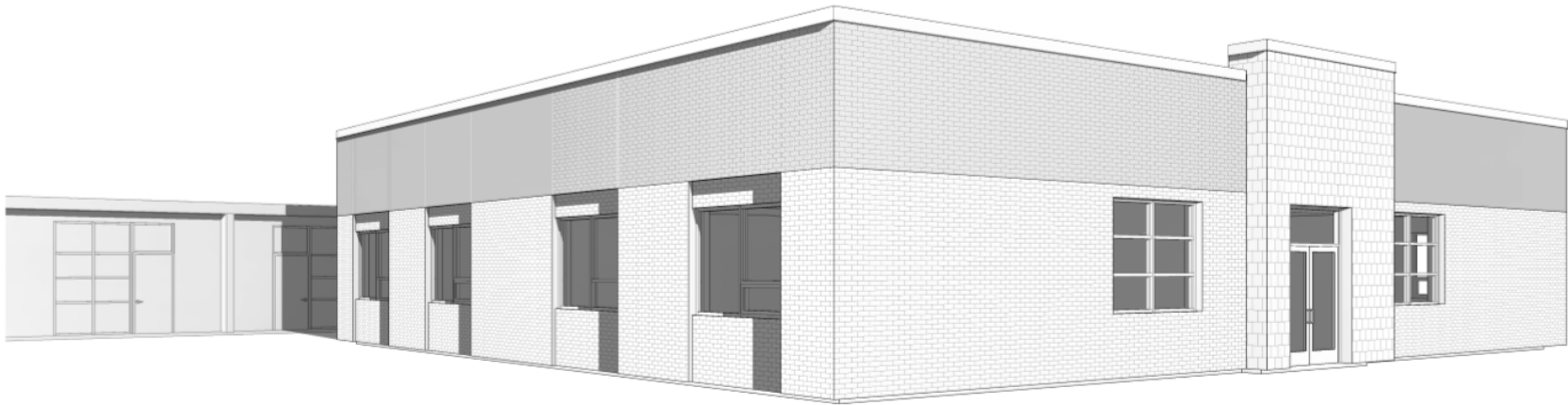
**Bell MS – 1 Story - 4 Classroom Addition**



CTE South – New Building



# Jefferson HS –Addition & Renovation



Lumberg ES – 4 CR Addition



**Manning Option – Addition & Renovation**



**Wayne Carle – Classroom Addition**



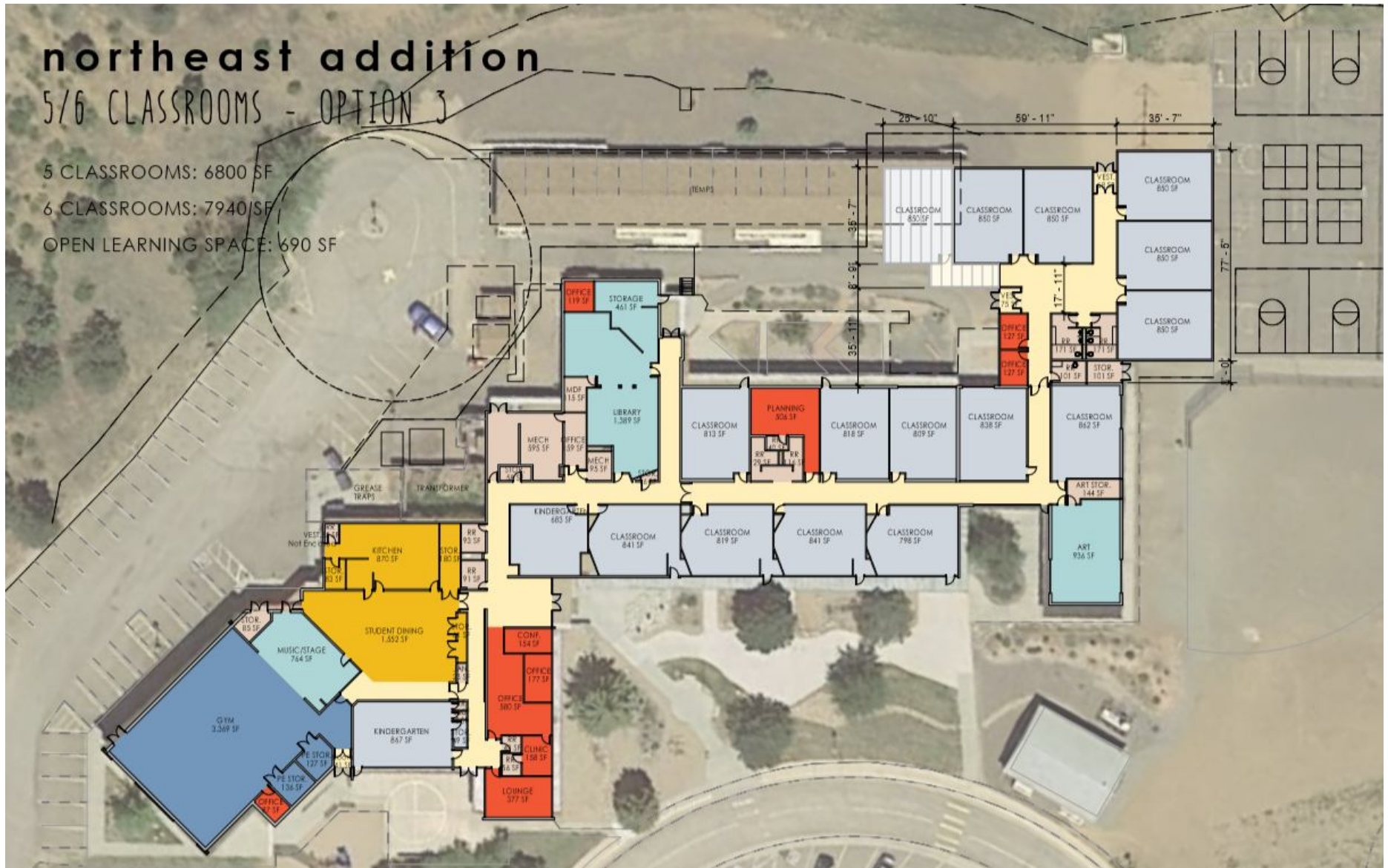
# northeast addition

## 5/6 CLASSROOMS - OPTION 3

5 CLASSROOMS: 6800 SF

6 CLASSROOMS: 7940 SF

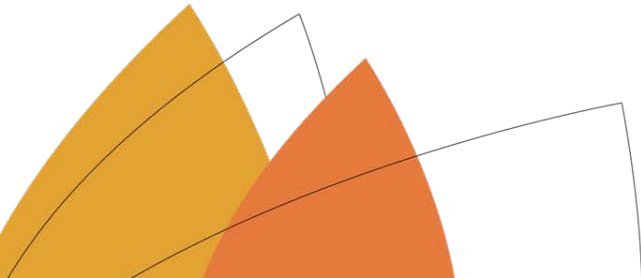
OPEN LEARNING SPACE: 690 SF



Parmalee ES – Classroom Addition

# 2020-21 DAC School Budget Survey Results Summary

January 2020

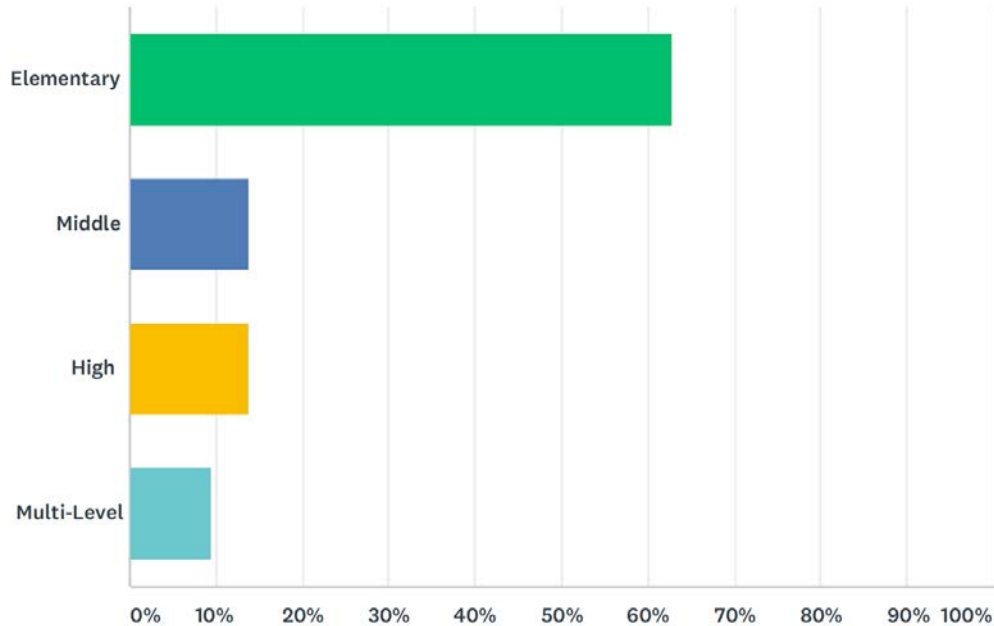


# Survey Background

- Available to all School Accountability Committees
- Administered online
- Open from November 1 through December 20, 2019

# Responses by Level

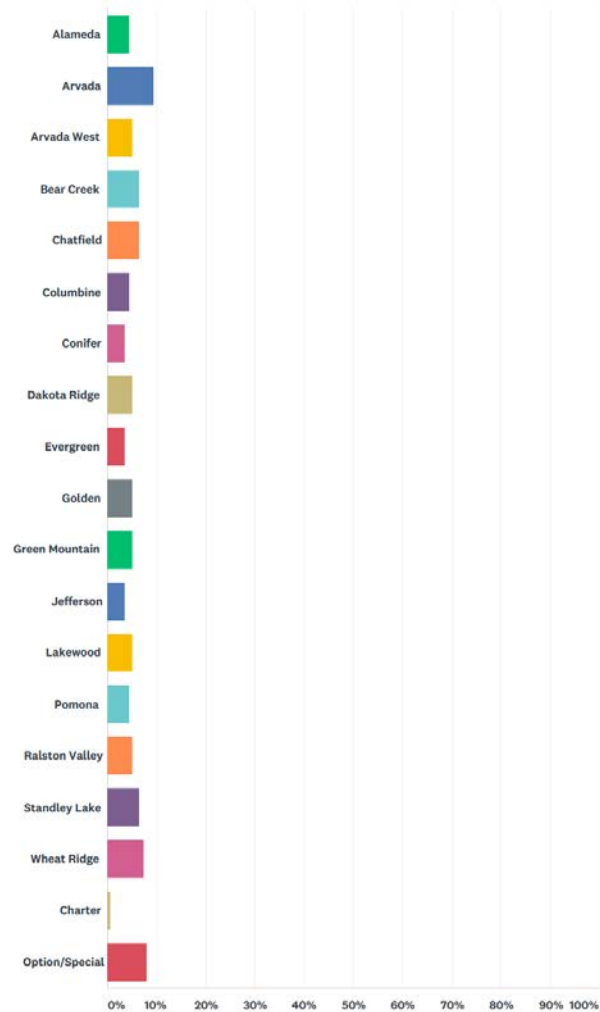
Answered: 137 Skipped: 0



137 Schools

Elementary 63%  
Middle 14%  
High 14%  
Multi-level 9%

# Responses by Articulation Area



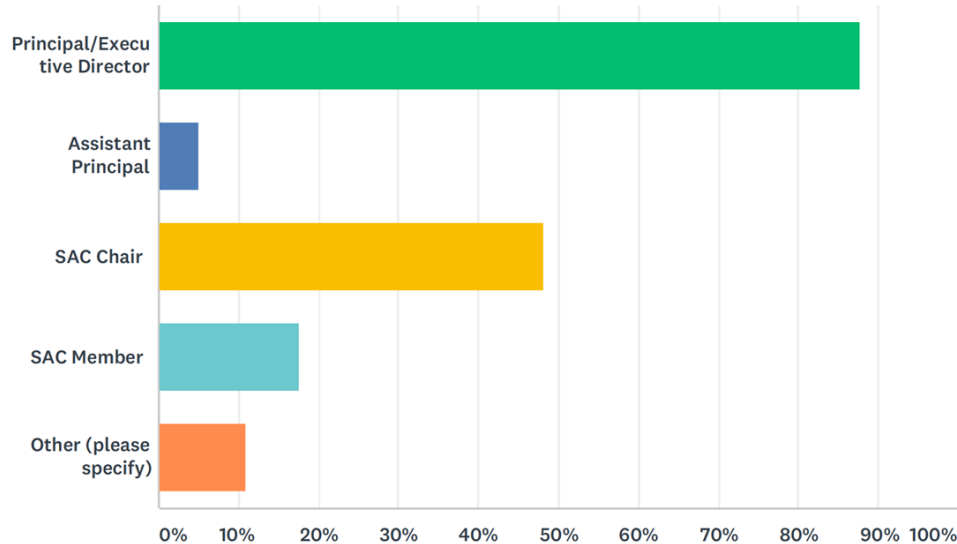
All neighborhood &  
option schools  
responded

One charter school  
responded

# Respondent Role

Title of the individual(s) submitting this questionnaire (check all that apply)

Answered: 137 Skipped: 0



Nearly 90% of responses submitted with the principal

About two-thirds submitted with a SAC chair/member

# SAC Membership

The school's current SAC includes:

ANSWER CHOICES	RESPONSES	
the school's Principal or Assistant Principal	100.00%	135
at least One Teacher from the school	88.89%	120
at least Three Parents of students enrolled at the school	89.63%	121
at least One Member of an organization of parents, teachers, students organized by the school (e.g. PTA/PTO)	88.89%	120
at least One Community member	50.37%	68
Total Respondents: 135		

Respondents were directed to “check all that apply” so responses exceed 100%

# SAC Meeting Frequency

SAC meets (check the most accurate answer):

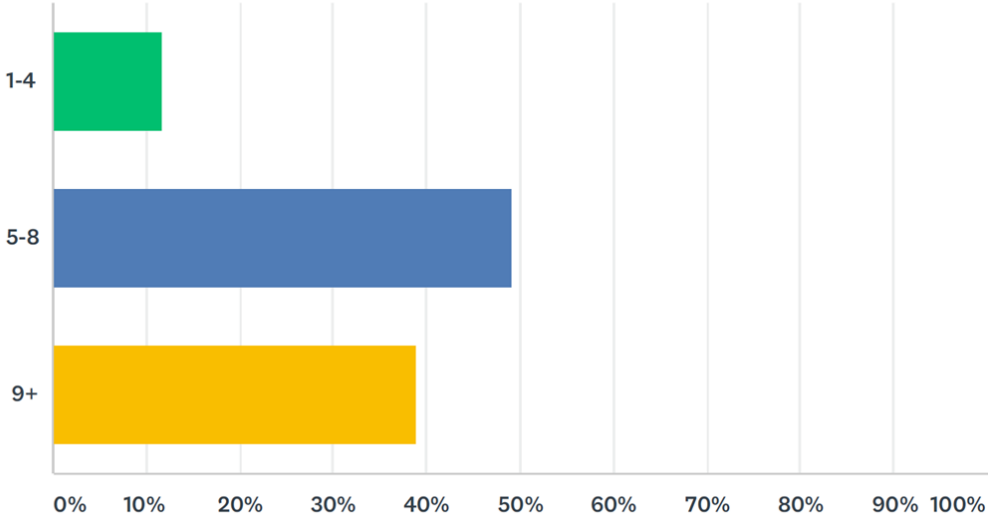
ANSWER CHOICES	RESPONSES	
monthly during the school year (may exclude a month or two)	51.85%	70
quarterly during the school year	45.19%	61
less than quarterly during the school year	2.96%	4
TOTAL	135	



# SAC Meeting Attendance

The average number of attendees at our regular SAC meetings is:

Answered: 136 Skipped: 1



# The agendas for SAC meetings are typically ...

ANSWER CHOICES	RESPONSES	
Constructed by the Principal/school leadership	32.59%	44
Constructed by the SAC Chair/leadership	3.70%	5
Co-constructed (developed in partnership) by the SAC Chair and Principal	57.78%	78
Other (please specify)	5.93%	8
TOTAL		135

# Minutes and agendas for SAC meetings are typically ...

ANSWER CHOICES	RESPONSES	
Not published	13.24%	18
Published and available in the school's office	11.76%	16
Published and available on the school's website	52.21%	71
Available when requested	22.79%	31
TOTAL		136

# As part of the Budget Prioritization Process, our SAC ...

ANSWER CHOICES	RESPONSES	
Engaged in a conversation about school budget priorities and recommended priorities to the principal	76.87%	103
Engaged in a conversation about school budget but did not provide input/recommendations regarding priorities to the principal	9.70%	13
Received information from school leadership about the school budget but did not provide input regarding school budget priorities	5.22%	7
Has not discussed the school's budget or spending priorities	8.21%	11
TOTAL		134

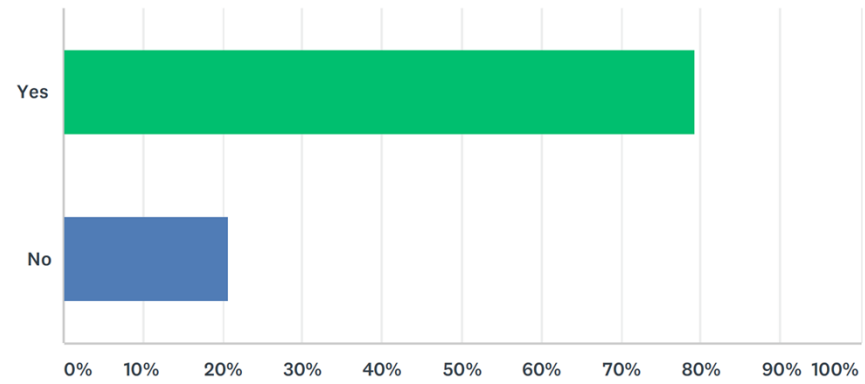
Please rate the degree to which the SAC provided input into the development of/revisions to the school's Unified Improvement Plan (UIP) during fall 2019?

	RESPONSES	
UIP has not been discussed by the SAC	2.96%	4
UIP was discussed by the SAC after it had been constructed by school personnel	49.63%	67
UIP was discussed by the SAC and provided input related to part or all of the 2019 UIP	43.70%	59
UIP was not discussed by the SAC or provided part or all of the 2019 UIP	3.70%	5
		135

# UIP & Budget Priorities

Did your SAC consider your school Unified Improvement Plan (UIP) as part of the process in determining your school's budget/spending priorities?

Answered: 131 Skipped: 6



# Spending Priorities by Level

The next 3 slides summarize SAC spending priorities by level for:

- #1 spending priority (slide 15)
- #2 spending priority (slide 16)
- #3 spending priority (slide 17)

Each slide shows descending order of priority by total counts

SCHOOL LEVEL #1 SPENDING PRIORITY BY LEVEL	Elementary	Middle	High	Multi-Level	Total Count
Additional classroom teachers	39	3	5	7	54
Mental/Behavioral Health supports	11	2	4	2	19
Additional elective programming (world languages, technology, additional Art, Music, PE)	6	3	2		11
Instructional coach	8				8
Instructional resources	2	3	1		6
Literacy interventions	5			1	6
Professional development	2	1	3		6
Math interventions	2	2		1	5
Additional administrators (assistant principal(s) and deans)	3	1			4
Additional para/aide time/support	2	1		1	4
Teacher release time for professional development/PLC	1	2			3
Technology (student devices, computer labs, classroom tools, software/apps, etc.)			2		2
Grand Total (items with total count of 1 not shown on slide; see full report)	84	18	19	12	133



SCHOOL LEVEL #2 SPENDING PRIORITY BY LEVEL	Elementary	Middle	High	Multi-Level	Total Count
Mental/Behavioral Health supports	12	2	1	4	19
Additional para/aide time/support	12	1		1	14
Additional elective programming (world languages, technology, additional Art, Music, PE)	6	1	5	1	13
Additional administrators (assistant principal(s) and deans)	10			1	11
Additional classroom teachers	4	2	2	1	9
Additional Digital Teacher Librarian (DTL)	9				9
Literacy interventions	5	4			9
Instructional coach	4	2		1	7
Teacher release time for professional development/PLC	6		1		7
Instructional resources	3	1	2		6
Math interventions	4		1	1	6
Professional development	2		2	1	5
Adding STEM/STEAM programming	1	1	2		4
Technology (student devices, computer labs, classroom tools, software/apps	3	1			4
Grand Total (items with 3 or less total count not shown on slide; see full report)	84	18	19	12	133

SCHOOL LEVEL #3 SPENDING PRIORITY BY LEVEL	Elementary	Middle	High	Multi-Level	Total Count
Mental/Behavioral Health supports	10	2	3	1	16
Additional para/aide time/support	12	1		1	14
Literacy interventions	8	2	1	1	12
Additional classroom teachers	5	2	3	1	11
Professional development	7	1	2	1	11
Additional elective programming (world languages, technology, additional Art, Music, PE)	5	1	1	1	8
Instructional coach	6		1	1	8
Additional Digital Teacher Librarian (DTL)	6			1	7
Instructional resources	6		1		7
Math interventions	4	2	1		7
Supplemental resources for at-risk student populations	3		3		6
Technology (student devices, computer labs, classroom tools, software/apps, etc)	3		1	2	6
Grand Total (items with 4 or less total count not shown on slide; see full report)	83	18	18	12	131

# DAC RECOMMENDATIONS

- DAC RECOMMENDS SBB FUNDING
  - Specifically to meet school staffing needs for additional educators
- DAC RECOMMENDS CONTINUED FOCUS ON MENTAL/BEHAVIORAL HEALTH SUPPORT
- DAC RECOMMENDS MAINTAINING CURRENT FUNDING FOR DUIP INITIATIVES
- DAC SUPPORTS FAMILY ENGAGEMENT THROUGH FSCP PROGRAMMING

# Questions/Discussion

